



door innovation

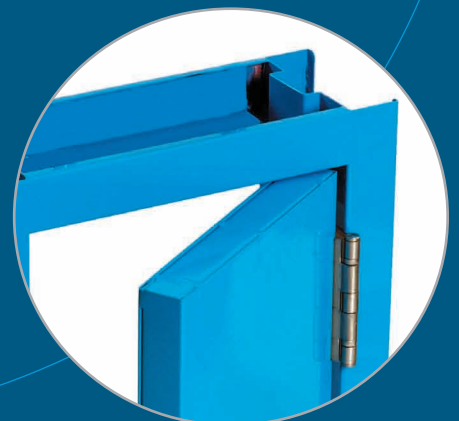
HINGED HSD



HINGED SECURITY DOORS (HSD)

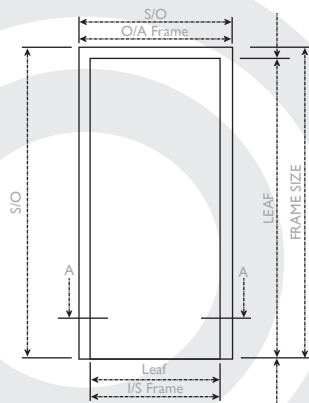
TYPICAL USES: WAREHOUSING, FACTORIES, COMMERCIAL BUILDINGS

BL Hinged doors have been designed for a wide range of buildings all manufactured to client specifications. They require little or no maintenance but provide strength and durability, can be used in all applications as timber doors but giving greater security. All doors come complete with a wide range of hardware. Available in coloured polyester powder coating or primed finish for site painting.



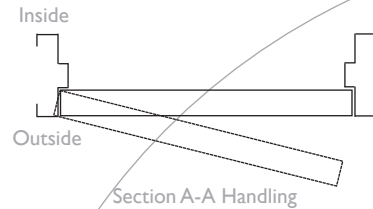
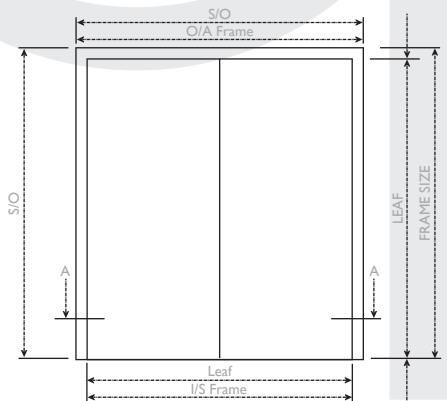
HINGED SECURITY DOOR FRAME / STANDARD DOOR

Door Elevation Pull Side

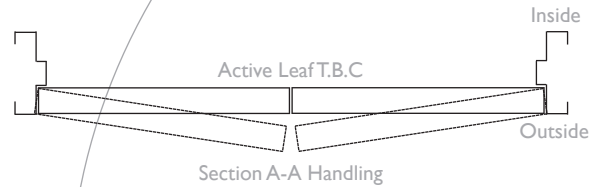


HINGED SECURITY DOOR FRAME / DOUBLE DOOR

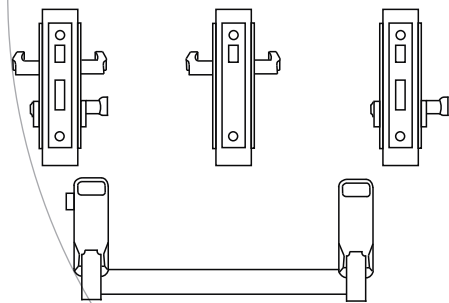
Door Elevation Pull Side



Section A-A Handling



Section A-A Handling



HINGED HSD

DOOR LEAF

- Two skins of 1.2mm (18 ga) thick galvanised steel.
- 45mm thick door leaf with no face seams.
- Doors are stiffened, insulated and sound deadened with pre-expanded, small cell honeycomb core material and laminated under pressure to face the skins.
- Doors are complete with lock and hardware reinforcements.
- Face skins are connected by a continuous "deep pocket" interlocking edge lock seam for added strength and durability.
- 1.6mm (16ga.) steel end channels projection welded to the top and bottom of the door.
- Door edges are bevelled for ease of operation and close fit.
- Doors are morticed, reinforced, drilled and tapped for three templated hinges.
- On double doors, an astragal is fitted to the leading edge of one leaf to ensure a totally sealed unit.

DOOR FRAME & FIXING

- Manufactured from 1.5mm (16ga.) galvanised steel to BS 1245 with double rebate profile.
- Supplied in either knock down or fully welded smooth finish.
- Corners have integral reinforcements for solid and easy bolting of jambs and head.
- Frames are morticed, reinforced, drilled and tapped for hinges and strikes.
- Hinge and strike reinforcements are protected by metal guard boxes.
- Frames are provided with four fixings per jamb and built-in adjustment and complete over caps.

TYPICAL HARDWARE

- Assa 3065 sashlock.
- Assa 640 lever handles, cylinder and thumbturn.
- Dorma TS 71 or TS 83 door closer.
- 1.5 pairs of 114mm x 102mm template drilled stainless steel hinges.
- On double doors, 2 lever action flush bolts are located within the leading edge of the inactive door leaf.
- A large number of alternative lock and handle arrangements can be provided to suit the individual client's requirements.
- All hardware is factory fitted unless otherwise stated.

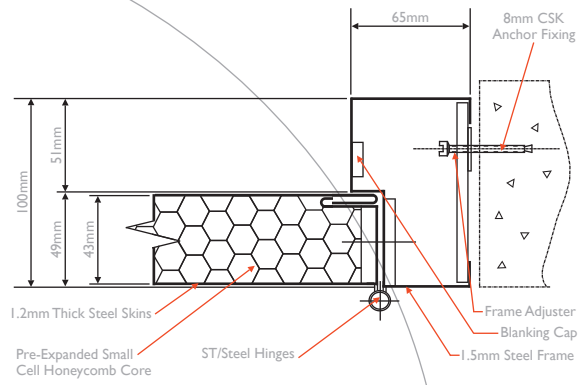
The use of BL Shutters approved hardware is strongly recommended since the choice of hardware can greatly effect fire performance and maintenance.

FINISH

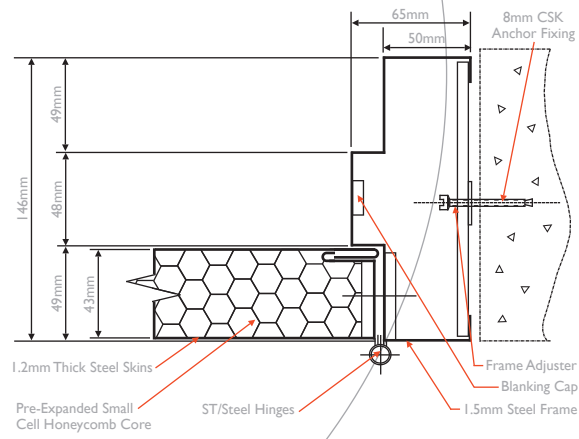
All doors and frames are manufactured from hot dipped galvanised steel and primed, ready for site painting by others or polyester powder coated to choice of colours.

HINGED SECURITY DOOR STANDARD FRAME & FIXING DETAILS

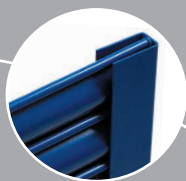
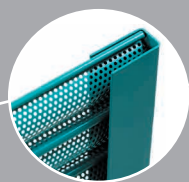
Standard 100mm Single Rebate Frame



Standard 146mm Double Rebate Frame



doorinnovation



- COMMERCIAL ROLLER SHUTTERS
- INDUSTRIAL ROLLER SHUTTERS
- FIRE ROLLER SHUTTERS
- ALUMINIUM ROLLER SHUTTERS
- PVC SCREENS & DOORS
- INSULATED SECTIONAL DOOR
- INDUSTRIAL INSULATED DOORS
- GARAGE ROLLER DOORS

ADDITIONAL PRODUCTS

BL SHUTTERS LTD

Carn Road, Carn Industrial Area, Portadown, Co. Armagh, BT63 5WG

T : 028 3833 3551 F : 028 3835 0204

E : sales@blshutters.co.uk

www.blshutters.co.uk

